

Vicinity Map scale 1"=2000'

NOTES:

USE: RESIDENTIAL SF 'C'
 ZONING: R-9 (CUPD)
 TAX MAP NO.: 61-(1)-PT of 81
 WATER: COUNTY SYSTEM
 SEWER: COUNTY SYSTEM
 DRAINAGE: CURB & GUTTER
 NO. OF LOTS: 22
 AREA IN LOTS: 5.498 Acres
 AREA IN ROADS: 0.880 Acres
 AREA IN OPEN SPACE: 2.555 Acres
 TOTAL AREA: 8.933 Acres
 TRACT NO.: SF-10 (PORTION OF)
 INTERNAL OPEN SPACE: 0.227 Acres

OPEN SPACE TABULATION
 OPEN SPACE 'A' 2.237 Acres
 OPEN SPACE 'B' 0.318 Acres
 TOTAL OPEN SPACE .. 2.555 Acres

STANDING OAK PHASE-2

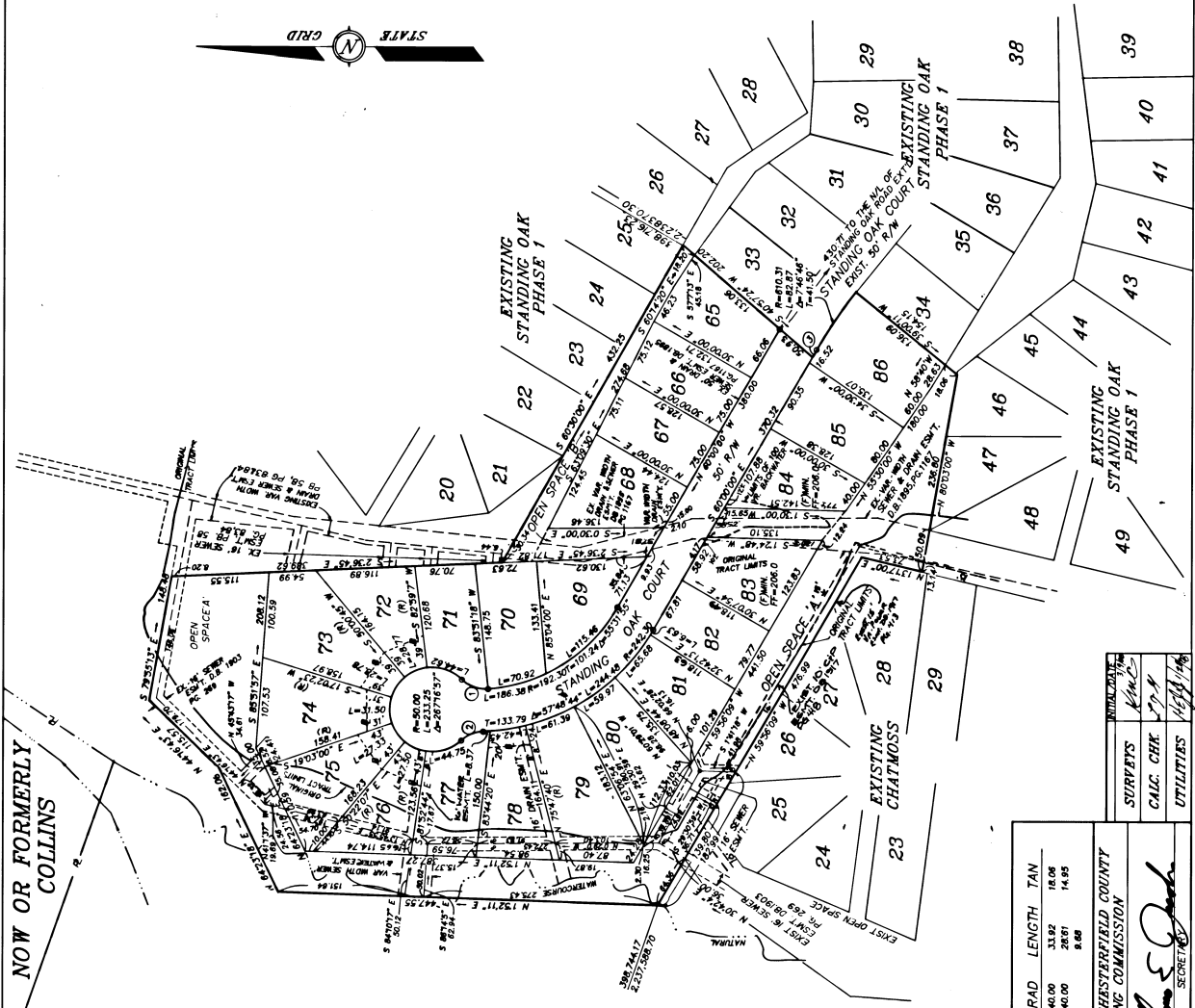
CLOVER HILL DISTRICT * CHESTERFIELD COUNTY, VA

DATE: MARCH 7, 1988 SCALE: 1"=100'

J.K. TIMMONS & ASSOCIATES, P.C.
 ENGINEERS & SURVEYORS
 RICHMOND, VIRGINIA

JN: 332

SHEET 2 of 2



NOW OR FORMERLY COLLINS

INVESTORS WOODLAKE DEVELOPMENT CORP.

DELTA/BRNG RAD	LENGTH	TAN
① 48°15'16"	40.00	31.82
② 40°58'30"	40.00	28.81
③ S 80°00' E	8.68	8.68

APPROVED CHESTERFIELD COUNTY PLANNING COMMISSION

DATE: *J. K. Timmons*
 SECRETARY

NO.	DATE	BY	REVISION
1		JKT	INITIAL PLAN
2		JKT	REVISED PLAN
3		JKT	REVISED PLAN

SURVEYS
 CALC CHK
 UTILITIES