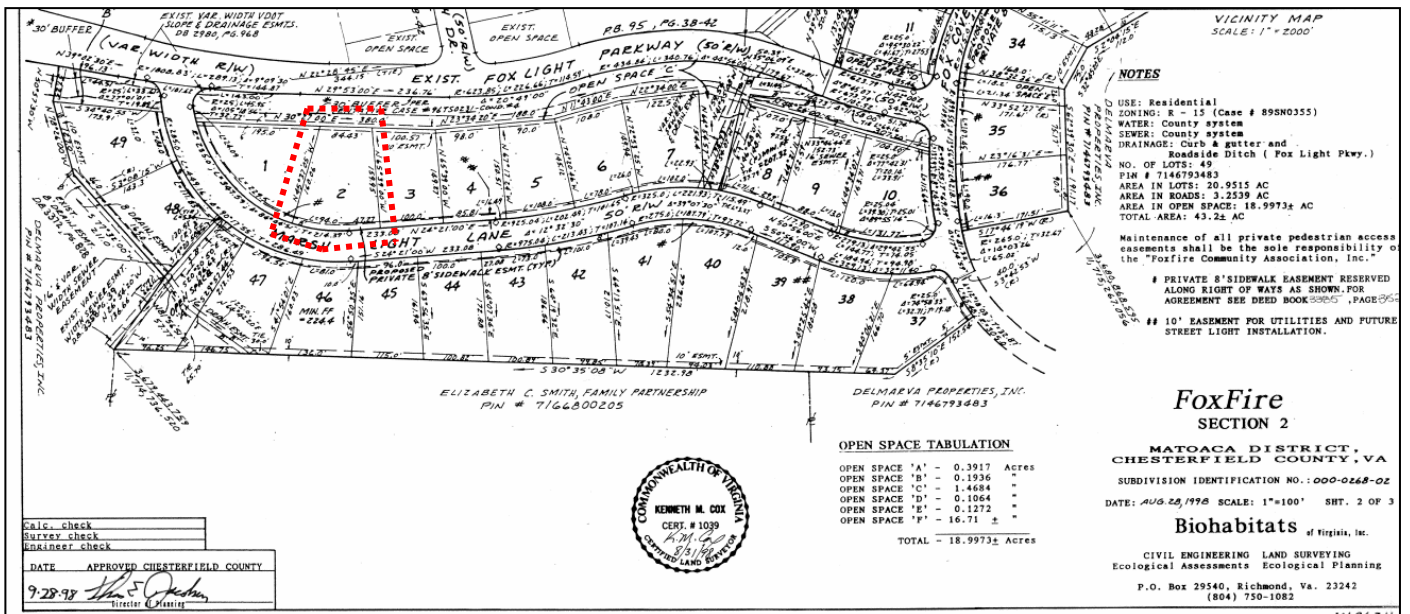
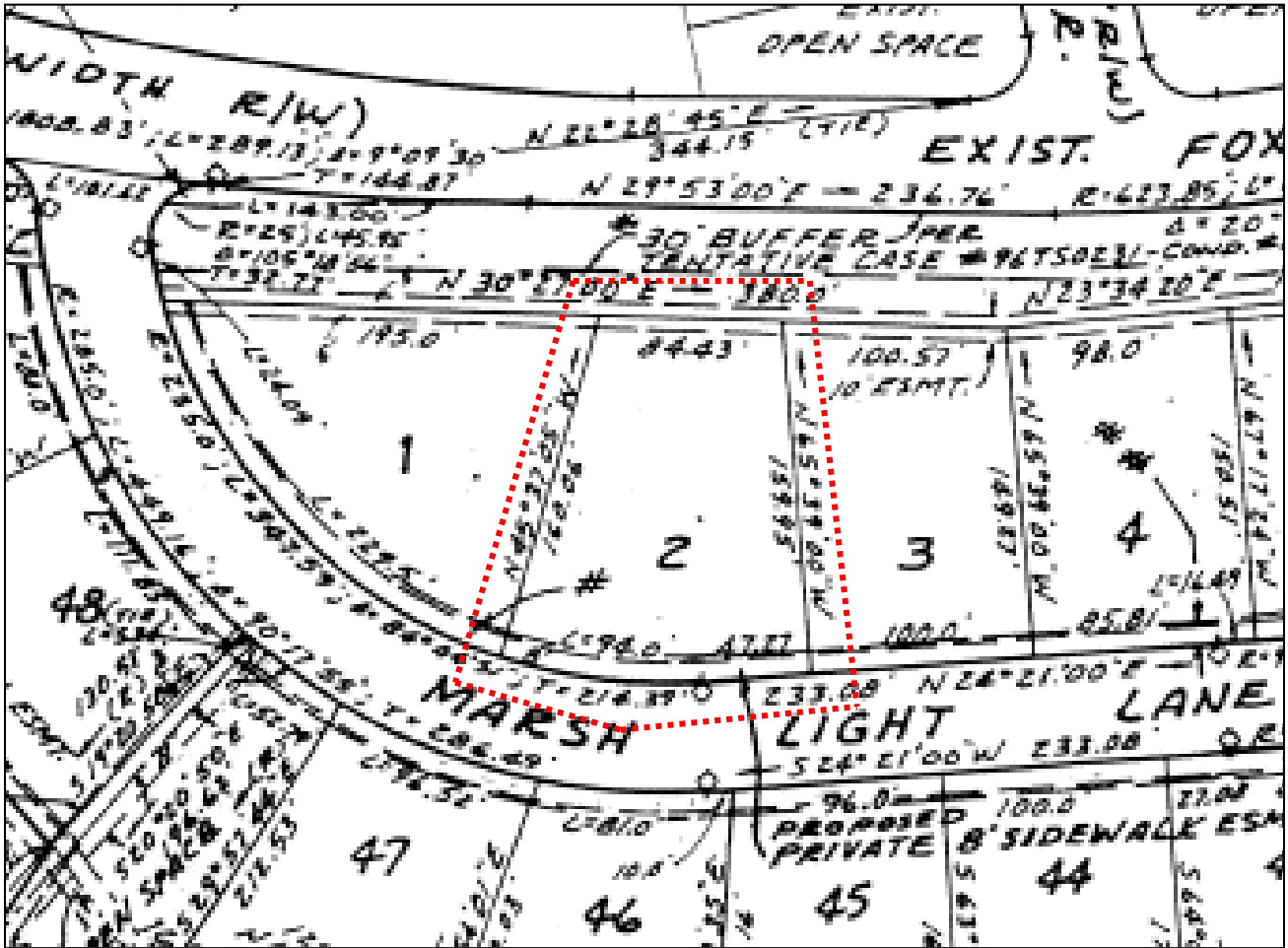


# 5554 Marsh Light Lane - Moseley, VA 23120

County Tax Plat Information

Lot Size: .42 Acres / 18,165 SF



**NOTES**

- USE: Residential
- ZONING: R - 15 (Case # 89S00355)
- WATER: County system
- SEWER: County system
- DRAINAGE: Curb & gutter and Roadside Ditch ( Fox Light Pkwy.)
- NO. OF LOTS: 49
- PIN # 7146793483
- AREA IN LOTS: 20.9515 AC
- AREA IN ROADS: 3.2539 AC
- AREA IN OPEN SPACE: 18.9973 AC
- TOTAL AREA: 43.22 AC

Maintenance of all private pedestrian access easements shall be the sole responsibility of the "Foxfire Community Association, Inc."

# PRIVATE 8' SIDEWALK EASEMENT RESERVED ALONG RIGHT OF WAYS AS SHOWN. FOR AGREEMENT SEE DEED BOOK 8885, PAGE 85

# 10' EASEMENT FOR UTILITIES AND FUTURE STREET LIGHT INSTALLATION.

**OPEN SPACE TABULATION**

OPEN SPACE 'A'	- 0.3917 Acres
OPEN SPACE 'B'	- 0.1936 "
OPEN SPACE 'C'	- 1.4684 "
OPEN SPACE 'D'	- 0.1064 "
OPEN SPACE 'E'	- 0.1272 "
OPEN SPACE 'F'	- 16.71 ± "
<b>TOTAL</b>	<b>- 18.9973± Acres</b>

**FoxFire**  
SECTION 2

MATOACA DISTRICT,  
CHESTERFIELD COUNTY, VA

SUBDIVISION IDENTIFICATION NO. 0000-0268-02

DATE: AUG. 25, 1978 SCALE: 1"=100' SHT. 2 OF 3

**Biohabitats** of Virginia, Inc.

CIVIL ENGINEERING LAND SURVEYING  
Ecological Assessments Ecological Planning  
P.O. Box 29540, Richmond, Va. 23242  
(804) 750-1082



Calc. check  
Survey check  
Mapmaker check

DATE APPROVED CHESTERFIELD COUNTY  
9-28-98 *W.E. Jordan*  
Director of Planning